

ggs

GOERG & SCHNEIDER
Tone · Schamotte · Massen



since 1924
**INNOVATION &
SUSTAINABILITY**

A name for generations. Goerg & Schneider.

“You are looking at our anniversary booklet which has been printed to mark the 100th anniversary of our company formation on 1 September 1924. We pride ourselves on the fact that this company has been held in family ownership over the entire time span of four generations during which shareholders and managers have always been family members. We continue to operate our business in a visionary manner thus being strongly committed to shape the future success of Goerg & Schneider – at all times with an eye to sustainability.”

Hartmut Goerg, Dipl. Wirtsch. Ing.

Florian Goerg, MSc. Business Administration





SINCE 1924

INNOVATION & SUSTAINABILITY

We are a medium-sized family-run business in the stone and earth industry headquartered in the Westerwald region in Germany. Goerg & Schneider is one of the leading German producers and suppliers of special ceramic clays and processed clay ceramic raw materials. The company is currently held in family ownership of the third and fourth generation and is headed by shareholders Hartmut and Florian Goerg.

Our company's impressive track record of no less than 100 years and the associated ongoing enhancement and progress is characterized by the least possible disturbance of nature in the excavation of near-surface raw materials. Likewise, we place great emphasis on sustainability during the extraction and processing of our special clays plus we rely on an array of quality, energy and eco management systems.

We strive to play a leading role as a raw materials supplier and tapping into future markets requires us to stay ahead of the game and foster an innovative research landscape in the refinement of siliceous raw material solutions and the optimization of production processes. Much of this innovation is brought forward by relying on our own knowledgeable specialists and partnering with qualified experts in plant and mechanical engineering as well as cooperating with academic institutions and external institutes. As a result, there is ample supply to serve promising new areas of application and meet the needs for new finished product solutions.

Our key goals are to comply with our users' quality requirements and make sure that there is a constant supply of raw materials available; likewise we are dedicated to secure the long-term capability of our company without losing sight of our staff's needs.

OUR KNOWLEDGE

HAS BEEN YOUR CLAY FOR DECADES

1924

The open trading company Goerg & Schneider was founded by the merchants Benedikt Goerg and Alois Schneider.



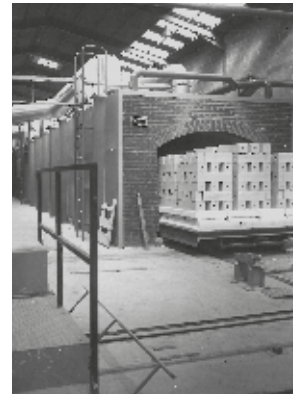
1924-1956

Expansion of the raw material base through the development of numerous extraction operations (1st corporate Generation) in the Westerwald clay basin.



1965

Commissioning of the first tunnel kiln and entry into chamotte production. Creation of the basis for the further processing of ceramic raw materials (2nd corporate Generation, Walter Goerg).



1967-1973

Expansion of the furnace capacity for chamotte production and commissioning of the grinding plants I and II for crushing and sieving chamottes and calcinates.

1998 – 2018

Foundation and involvement in the Mittelhessische Tonbergbau GmbH (MTG), set up for the utilization of raw material deposits and preparation facilities in the Giessen/Lahn area.

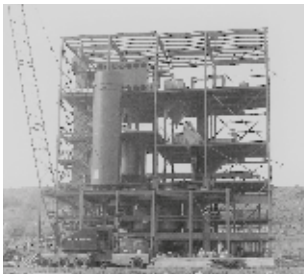
Acquisition of the Goddert, Kettenbach, Stoss/Langenaubach and Barbara/Girod deposits.

2022

Long-term leasing of the Langweiden/Beselich-Oberniefenbach operation and takeover of the customer responsibility of Alois Weiss GmbH u. Co. Tonbergbau KG. Acquisition of the Zimmermann/Staudt operations.

1988

Construction and installation of the clay grinding plant for drying and fine grinding of clays. Subsequent expansion of the clay grinding plant with Eirich mixer for the production of ceramic bodies and basis for further value creation of ceramic raw materials (3rd corporate Generation, Hartmut and Martina Goerg)



2018

Florian Goerg joins the Goerg & Schneider company as the 4th generation.

2024

100th anniversary of the company Goerg & Schneider GmbH u. Co. KG.

1992

Construction of the central laboratory to concentrate quality control and development activities

1996

The certification of a quality management system according to DIN EN ISO 9001 underlines the ambition "Quality and service with innovation. For your success in clay".

A photograph of a quarry or construction site. In the center, a white dump truck is being loaded with material by a yellow Liebherr excavator. The excavator's bucket is raised and dumping into the truck's bed. The background shows a large, layered rock face. The overall scene is industrial and active.

GOERG & SCHNEIDER

THE COMPANY IN NUMBERS

100 years
of family business
Goerg & Schneider.

Today, the company has a good starting position for the coming decades. From the founding company has grown into a broad-based company.

Since
01/09/1924



4th Generation

The company is wholly owned by the owned by the Goerg family.

94
employees

650,000

tonnes of
marketed raw
materials per
year.



1381

customers trust in
37 countries around
the world on
Goerg & Schneider
raw materials

We delivered 385,000
tonnes to European countries
in 2023

From our location in the Westerwald, we supply our products to whole Europe. Our own railway siding at the Boden plant and the proximity to Rhine river ports, enable us to optimise the logistics of our raw materials in terms of price and environment.

126

Standard and
customised
raw clay
blends.

57

Ceramic bodies for
manufactories and hobby
applications.

The range also includes milled clays, pellets and casting slips for the industry.

8

agencies
in various countries.



GOERG & SCHNEIDER

YOUR SOLUTION PROVIDER

Our focus on the extraction, processing and further treatment of ceramic raw materials allows us to offer our customers raw materials with added value along the entire value chain. As a solution provider, we think solution-oriented and give you the full package consisting of raw material, service and support.

Since our foundation in 1924, we have been developing individual customer solutions for ceramic products. Clay is a versatile, technical raw material. Our raw materials and products are high-performance building materials that are used in all areas of the clay ceramic industry. Beyond the pure raw material, Goerg & Schneider stands out as a solution partner even more:

Reliability for your quality:

The quality of the business relationship with our partners is reflected in the product itself and in our support for customers.

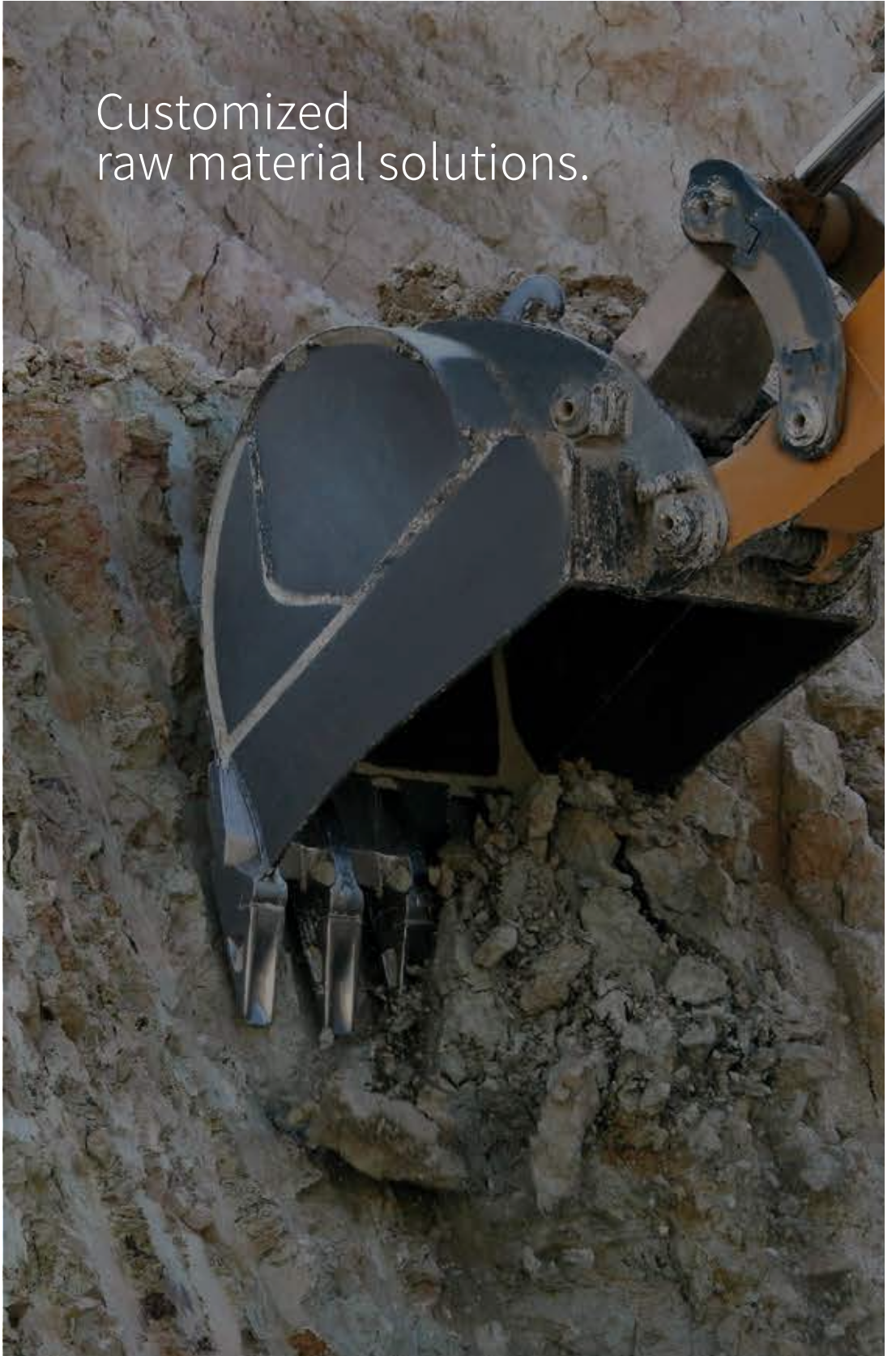
Continuity for your production

For many years, our know-how and knowledge has been the basis for sophisticated raw material solutions for your production conditions.

Variety for your requirements

Our numerous raw clays form the basis for customized clay mixtures, raw chamotte and bodies for the manufacturing of ceramic products.





Customized
raw material solutions.

The selective extraction of raw clays and raw kaolin, its subsequent processing and further refining into semi-finished products is the main element of our product range today and represents a suitable raw material solution for your applications.

YOUR SOLUTION PROVIDER FOR CERAMIC APPLICATIONS

Clay is a versatile, technical raw material. Our raw materials and products are high-performance building materials that are used in all areas of the clay ceramic industry.

Tiles:

Standardized or customer-specific mixtures are created from individual components. Individual raw material blends from our clays and chamottes make sure that technical properties are evenly balanced and provide good pressing behaviour for plastic shapes.

Sanitary ware:

We offer ready-made raw materials (clay blends, pellets) suitable for a wide variety of technologies and casting techniques. We also supply chamottes that are highly valued in the industry for their technical characteristics and defined grain curves. We are therefore a one-stop source offering tailor-made raw material solutions for any application.

Brick/Clinker:

We offer the right raw material solution for demanding customers. Our clays for applications in the brick and clinker industry are characterized by their red firing color, good drying properties and rapid firing suitability.

Other building ceramic applications:

We provide suitable raw material concepts for porcelain stoneware and earthenware as well as casting applications (e.g. wall and stove tiles).





NON-CERAMIC APPLICATIONS

We have been able to incorporate the knowledge gained through long years of hands-on experience into the technical properties of our raw materials in ceramic applications, and over time have transferred this knowledge to other areas of application.

The close cooperation with external research institutes, industry partners and last but not least the learnings and findings gathered from these partnerships have led to a deep understanding of our customers' needs. In particular, the tailored preparation and processing of our own raw materials as well as those sourced from elsewhere have taught us how to use these semi-finished products in various special applications outside of the classic ceramic industry.

High-performance building materials and sustainable raw material solutions for the building industrie: clay minerals accelerate the development of strength and drying in dry mortars. Special clays and calcined clays from Goerg & Schneider improve the mechanical properties of caulks with lower weights. We also promote sustainable construction with solutions that contain clay minerals as natural fillers for insulation. The fillers also include calcined clays as alternatives to Portland cement, which significantly reduces carbon emissions.

Rheological and mechanical effectiveness of our raw materials for special applications: Clay minerals occur naturally and therefore are environmentally friendly solutions per se. The mineralogical properties of the clay minerals from a certain Goerg & Schneider deposit make it possible, for example, to be utilized in specific filter technology. We are currently working on further options to make filtering suspensions with our raw materials more environmentally friendly.





We offer services and support from a single source.

In addition to our classic raw materials business, we offer various services in the field of transport, logistics and raw material analyses.

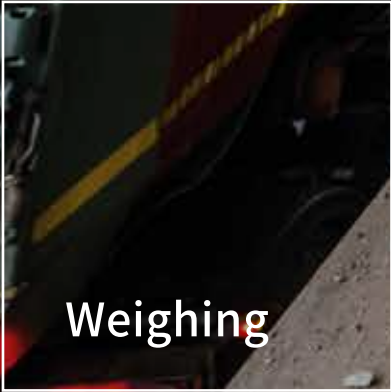
We would be happy to assist in obtaining a quotation and organising the transport. There is a number of reliable logistic forwarders that we cooperate with. This also includes intermodal models as well as ship, train and truck transport. If needed, we have the capacity to design individual packaging and logistics concepts for our customers in collaboration with our partners and logistics service providers.

In our modern central laboratory, the following tests on ceramic raw materials are carried out:


Chemical analysis (XRF), dilatometer examinations (expansion-shrinkage behaviour, thermal expansion coefficient determinations), firing behaviour, dry mechanic strengths, casting ability, biscuit formation and rheology, grain distribution and bulk density. We carry out further testing on request.



Logistic



Weighing



Laboratory
Analyses



GOERG & SCHNEIDER

YOUR RAW MATERIAL PARTNER

We have continuously built on our experience and further developed and honed our skills over the years - and as a competent and reliable partner for our customers, we always make sure to supply only the best raw materials. Our business practices are based on our conviction that only truthful and respectful deeds will get you further and therefore we strive to maintain long-term business relationships with our esteemed partners.

The European minerals sector is one that faces stringent environmental regulations. Authorization procedures are often very long and tedious and entail various statutory requirements such as Environmental Impact Assessments and restoration plans. Goerg & Schneider seeks to cause minimum disturbance to the surrounding communities by limiting the impact of our operations. The protection and preservation of the environment is one of the key priorities on our agenda before, during and after extraction.

The mined kaoliniticillitic clays are found only in the Westerwald. They are the essence of continual product innovation and development. The present range of products results from selective extraction being graded by quality combined with preparation and other modern further processing.

The company has mainly light- and white firing raw clays for the application in all building ceramic fields.

Goerg & Schneider is a diversified raw materials company. The mining of raw materials is carried out in our own open-cast mines. We have sufficient raw material reserves to continue to deliver raw materials for further processing in years to come.

Clay / Milled clay

Our raw clays are extracted by specific extraction systems as individual components in several open-cast mines. Using conveyor systems, the material is transported to sheltered interim storage facilities. As part of this process, representative samples are systematically drawn by automatic samplers. Subsequently, the raw clay samples are examined in the laboratory for various properties, always with a view to their later use, e.g. their behaviour under ceramic production conditions, grain size distribution and chemical analysis.

Milled clay and milled clay mixtures are produced on the basis of raw clay mixtures by drying and dry grinding. Depending on the application, these may be combined in the homogenization silo to create raw material blends.

Customer-specific blends: Raw material blends are made up of individual components, which are put together specifically for your needs after inspecting your production on site and carefully analysing the other raw materials used in production. Equipped with state-of-the-art production technology for raw material mining and processing machinery, we can offer raw material solutions that are perfectly suited to your needs. All clays from Goerg & Schneider are available as clay powder in various delivery forms. We are happy to provide additional customer service and support in forwarding and logistics operations.

Chamotte / Calcined clay

Our chamottes and calcined clays are formed into plastic strands on the basis of defined clay blends and additional homogenization processes. The firing takes place after the drying process in a gas-heated tunnel kiln has been completed. Depending on the technical quality and desired properties, the firing process allows different firing curves with a maximum firing temperature of 850 ° C - 1300 ° C. Low-iron grinding is done in our modern grinding plants. The subsequent screening classifies the chamottes into different grain sizes and defined grain distributions in fractions of e.g. 0-0.2 mm or 0-1.5 mm.

Innovative calcined products: Our broad raw material base and state-of-the-art production facilities are the foundation for our wide range of products and a variety of possible applications within the ceramic and non-ceramic field. Over time, we have been able to build on our expertise in the calcination of raw ma-

materials and in cooperation with our partners have developed innovative products. Likewise, we work closely with external research institutes on different projects.

Ceramic bodies

Depending on the form of delivery, our ceramic bodies are ready-to-use by the consumer without any additional processing. Ceramic bodies are produced by adding milled clays, milled chamottes and other product-specific additives (e.g. kaolin, feldspar, lime). Bodies are available in powder form, granulated (following the addition of 10 - 12% water) or plastic extrusion, if the water content is higher. After some small-scale raw material testing in our laboratory, our technical staff are available at the customer's premises to assist and support the introduction of bodies at the production site.

Fine ware preparation: The grinding and homogenization in our production facilities allows our products to be used in almost all ceramic application areas. Ceramic bodies can be produced in various forms: plastically extruded (18-24% moisture), granulated by adding water, dust-free (10-13% moisture), in bulk or in big bag, powder form with separate addition of chamotte.



GOERG & SCHNEIDER

MARKETS

Goerg & Schneider is represented by sales agencies throughout Europe.

Being internationally represented with sales agencies across Europe, we at Goerg & Schneider make sure that our customers can reach us wherever they are. All in all some 650,000 tons of ceramic clays, raw chamottes and ready-to-use bodies are sold on the market.

From the intermediate storage facilities in Boden the products are dispatched by lorry, rail or ship from the Rhine port. For delivery orders, consultation and customer service, you can contact our competent and experienced sales force based in Boden and abroad in our foreign sales offices. Our knowledgeable sales staff with a strong background in ceramic engineering show support and commitment in our technical advisory service team.

Goerg & Schneider has a strong international presence: With an export share of more than 50% of revenues, we currently sell into more than 20 countries with the focus on Europe, North Africa and the Middle East.

Your Contact for Germany:

GOERG & SCHNEIDER GmbH u. Co. KG
Guterborn 1
D- 56412 Boden

Phone: +49 2602 / 9273-0
E-Mail: info@goerg-schneider.de
www.goerg-schneider.de

Your Contact for France:

SOKA - société kaolinère armoricaine
5 pl de la Liberté
B.P. 417
F-22004 St-Brieuc

Phone: +33 2 / 96 33 21 55
Fax: +33 2 / 96 33 81 43
E-mail: sales@soka-kaolin.com
www.soka-kaolin.com

Your Contact for Italy:

Geomix s.r.l.
Dr. Benedetto Montermini
Viale Regina Pacis, 82
I-41049 SASSUOLO-MODENA

Phone: +39 05 / 36823722
Fax: +39 05 / 36990465
E-mail: info@geomixsrl.it

Your Contact for Kroatia / Slovenia:

RAVITERA d.o.o.
Zagrebacka 29
HR-10430 Samobor

Phone: +385 1 65 60 453
Fax: +385 1 65 60 147
E-Mail: info@ravitera.hr

Your Contact for Poland:

CERAM-Bartosz Kuliberda
ul.C 24/54
32-086 Wegrzce

Phone: +48 608350 / 064
E-Mail: bartosz.kuliberda@ymail.com

Your Contact for Spain:

Wolfgang Schattner - Ingeniero de cerámica
Lola Anglada 1, Esc. C, 4o 1a
E-08173 Sant Cugat del Vallés Barcelona

Phone: +34 609 377 057
E-Mail: wolgangschattner@gmail.com

Your Contact for Hungary:

Interkerám
Lajos Tóth
Pf. 197
Parasztfoiskola 12- 16
H- 6000 Kecskemét

Phone: +36 76/ 48 14 40
Fax : +36 76 / 48 14 40
E-mail: info@interkeram.hu

Goerg & Schneider International:

GOERG & SCHNEIDER GmbH u. Co. KG
Guterborn 1
D- 56412 Boden

Phone: +49 2602 / 9273-0
E-Mail: info@goerg-schneider.de
www.goerg-schneider.de



GOERG & SCHNEIDER YOUR EMPLOYER

Goerg & Schneider is a medium-sized, family-run business that has been operating successfully on the market since 1924. Locally rooted, we are proud to combine tradition and innovation in our corporate culture. With a dedicated team of professionals, we have continuously developed and become a reliable partner for our customers.

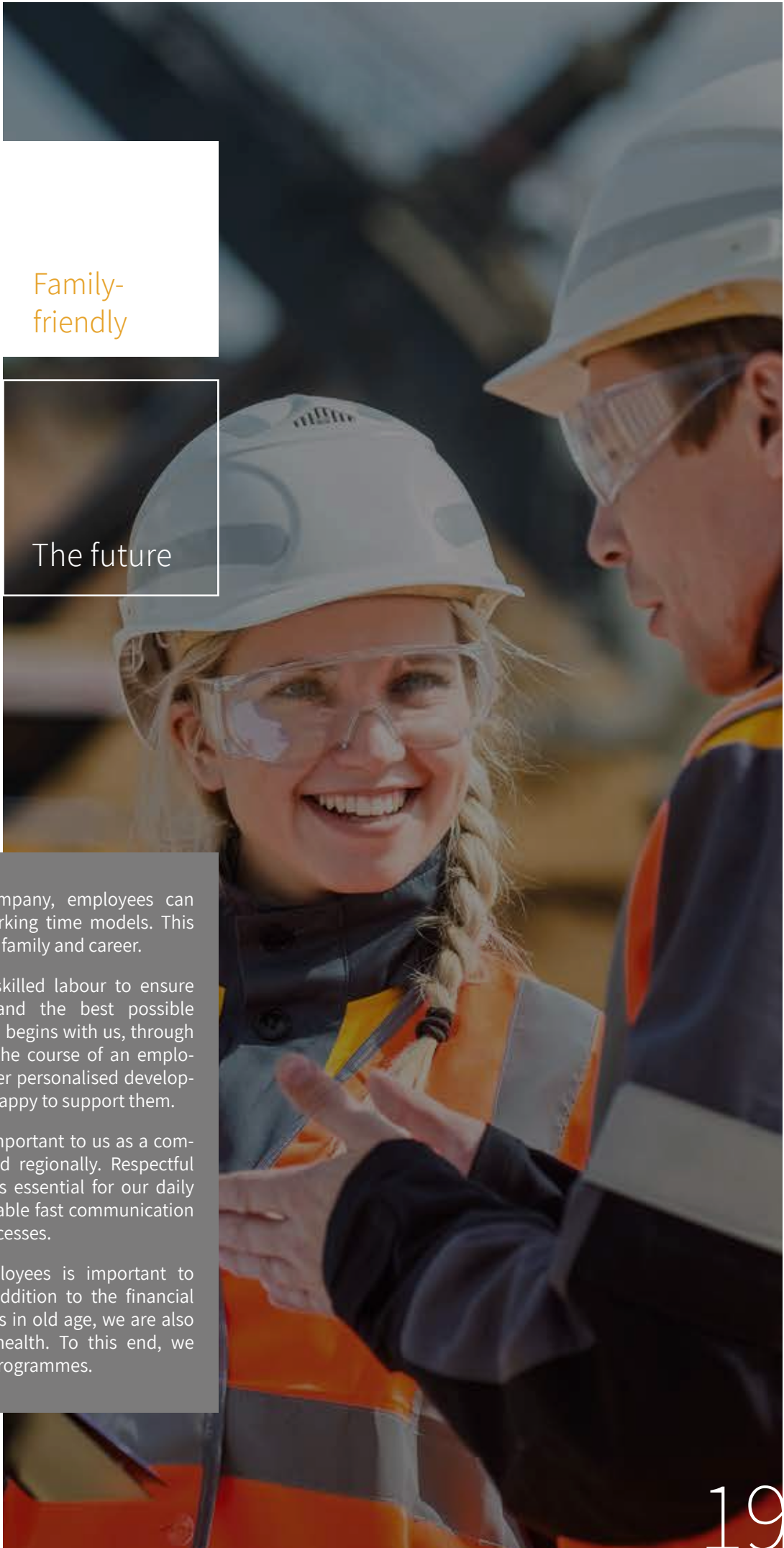
As a family business, we focus on trust, reliability, and long-term relationships. These values not only characterise our business practices but can also be felt in our working atmosphere. At Goerg & Schneider, every employee is an integral part of our corporate family, and we value the uniqueness and diversity of everyone.

In a medium-sized company like Goerg & Schneider, you can have a direct influence and make a significant contribution. Here, initiative is valued, and ideas have room to develop. We offer the chance to work on exciting projects in a dynamic environment and to develop both professionally and personally.

The family atmosphere at Goerg & Schneider is palpable, and team spirit is at the centre of our work culture. Together we overcome challenges, support each other, and celebrate successes. Flexibility and a good work-life balance are a matter of course for us to create a positive and motivating working environment.

As a medium-sized and family-run business, we are convinced that mutual success is based on the growth of everyone. We promote the continuous development of our employees and offer development opportunities that build on individual strengths and interests.

Training and education of young talents is a particular concern of ours.



Family-
friendly

Development
potential

The future

Community

As a family-friendly company, employees can choose from various working time models. This makes it easy to combine family and career.

Our aim is to develop skilled labour to ensure employee satisfaction and the best possible product quality. The path begins with us, through excellent training. Over the course of an employee's working life, we offer personalised development measures and are happy to support them.

A strong community is important to us as a company, both internally and regionally. Respectful interaction at eye level is essential for our daily work. Flat hierarchies enable fast communication and decision-making processes.

The future of our employees is important to Goerg & Schneider. In addition to the financial security of our employees in old age, we are also concerned about their health. To this end, we provide a wide range of programmes.



www.goerg-schneider.de

GOERG & SCHNEIDER GmbH u. Co. KG

Guterborn 1 | D-56412 Boden

Phone: +49 (0)2602 9273-0

E-Mail: info@goerg-schneider.de